

REPAINT REPORTER

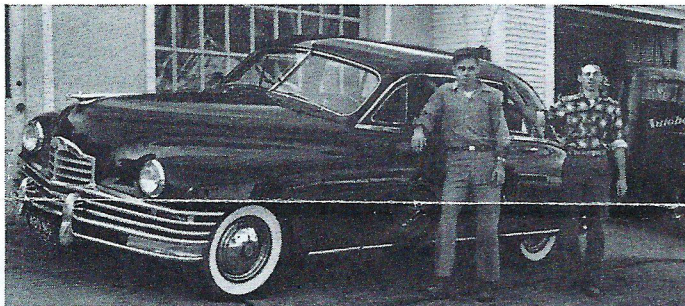
"TRADE TIPS FOR THE
AUTOMOTIVE PAINTER"

PUBLISHED BY DITZLER COLOR DIVISION • PITTSBURGH PLATE GLASS COMPANY • DETROIT, MICHIGAN

VOLUME 24, NO. 3

JULY - AUGUST, 1957

3-Year-Old Lustre Undimmed



Loy's Body Shop of Lewisburg, Ohio present as their proof that DITZLER Automotive Enamels stand up beautifully a Packard Sedan painted over 3 years ago which still exhibits a finish you couldn't tell from one applied last week. Furthermore, when one of the fenders recently required some repair work it was again refinished in DITZCO DQE Enamel and you can't tell where the 3-year-old finish leaves off and the new finish begins.

Loy's Body Shop was started in 1917 by the father of Bill and Ernie Loy who now operate it. It has been in its present location for 20 years and the Loys have used a DEWCMS (DITZLER Exact Weight Color Measuring System) since 1950. They have a reputation for doing excellent color work and do a lot of refinishing for new-car dealers in Lewisburg. They both say they get better color matches and find that DITZLER finishes hold up better than anything else they have tried—and they have tried them all.

On the Packard the Loys used DZE-24 Light Red Oxide

Get Acquainted with DURACRYL*



*Trade Mark

It will pay you in time and effort saved to try out Ditzler's new, distinctive DURACRYL when repairing cars finished with Acrylic Lacquers.

The last issue of REPAINT REPORTER covered Ditzler's new, simple method of applying the new DURACRYL. DURACRYL is available through your Ditzler jobber. Try it—you'll be glad you did.

Primer-Surfacer and DQE-10459 Packard Blue Poly Enamel. They obtain their DITZLER products from State Auto Supplies, Inc. in Richmond, Indiana.